

CHINA

CHINESE PERCUSSION GROUP

LUOGU (LOH GOOH)

DALUO (DAH-LOH) - GONGS AND BO (BOO-OH) CYMBALS = "CHANG"

BANGZI (BANG-ZUH) - WOODBLOCKS AND GU (GOOH) DRUMS = "DONG"

CHANG DONG DONG CHANG

CHANG DONG DONG CHANG

CHANG DONG DONG

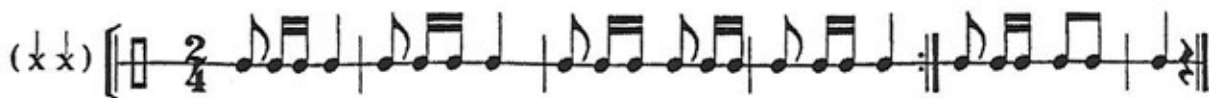
CHANG DONG DONG

CHANG DONG DONG CHANG

Shi Wu I - LION DANCE

(da da) [chahng dong dong chahng | chahng dong dong chahng | chahng dong dong chahng dong dong | chahng dong dong chahng |]

(Coda): chahng dong dong chahng chahng | chahng EE ||



Coda:

